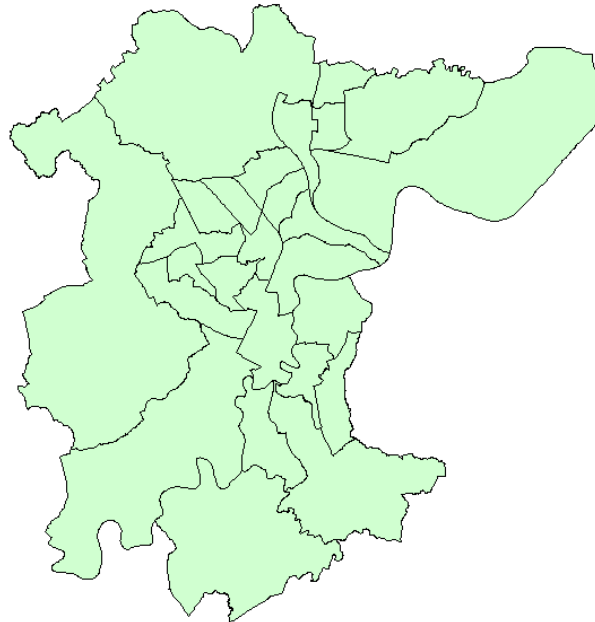




Most Serious Violent Crime

April 2009 – February 2010



AUTHOR	Anna Clark
DATE	March 2010
REF NO:	SD/002/10

This document has been produced for the purpose of reducing crime and disorder in the borough of Stockton. No part of this document may be copied or amended without prior consultation with the author named above or the Community Safety Manager.

RESTRICTED

The following report has been commissioned by Det Ch/Insp Carter to inform SSP about offences of Most Serious Violent Crime (MSVC), as per National Indicator 15 definition. Offences included in the MSVC definition are¹:

- Murder & Child Destruction
- Attempted Murder
- Wounding or other acts endangering life
- Grievous bodily harm without intent
- Causing death by dangerous / careless driving & causing death by aggravated vehicle taking

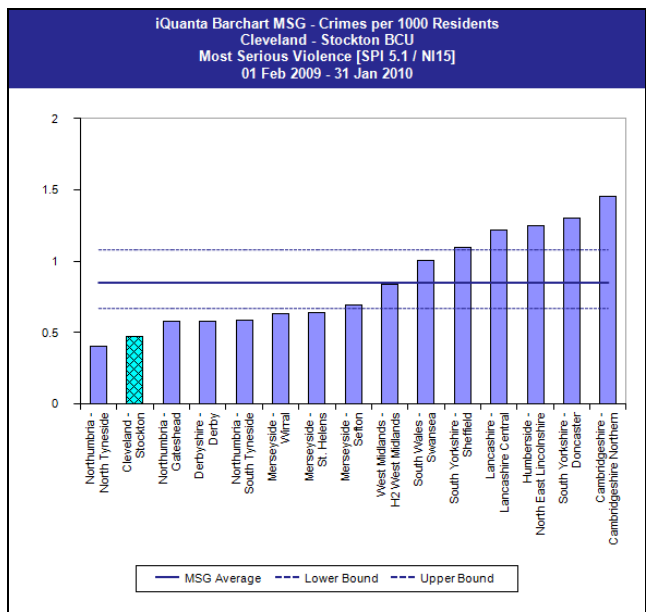
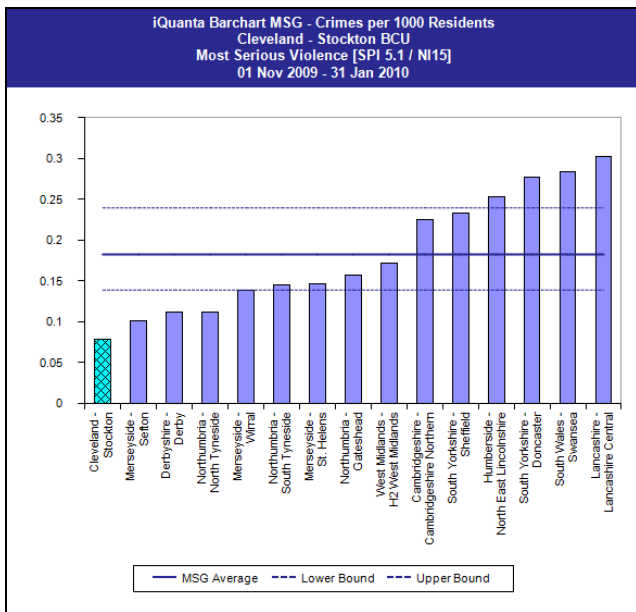
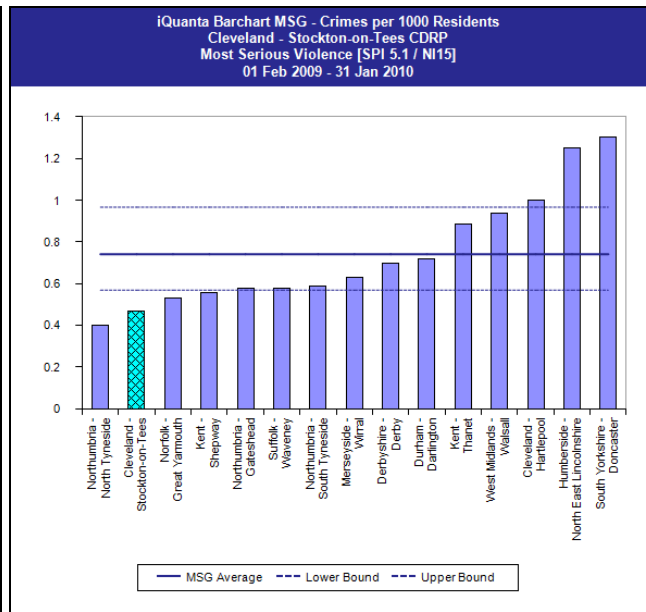
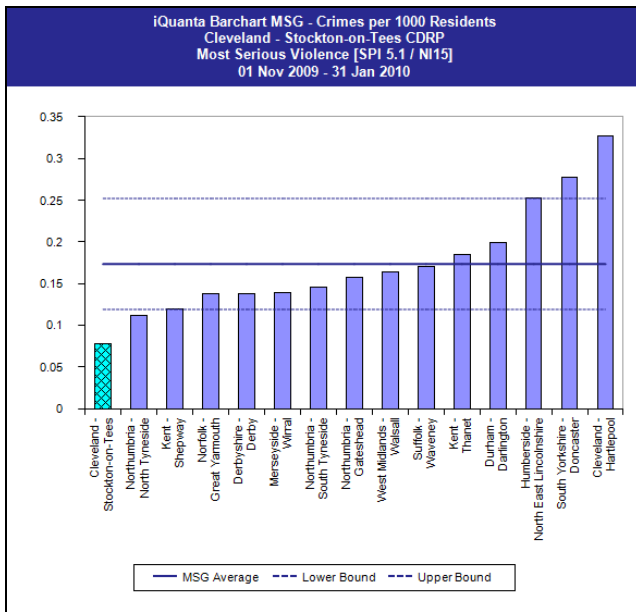
Between April 2009 and February 2010 there have been 82 offences of MSVC, which is an end of year projection of 89. This is an increase on previous years with 86 offences recorded in 2008/09 and 78 in 2007/08, and we will fail to meet the NI target to achieve this year of 76.

There has been a change in the proportion of crime categories that make up MSVC over the last three years; wounding or other acts endangering life was the most common category in the previous two years followed by grievous bodily harm without intent, but this trend has reversed this year to date. The table below shows a breakdown of crime categories by year.

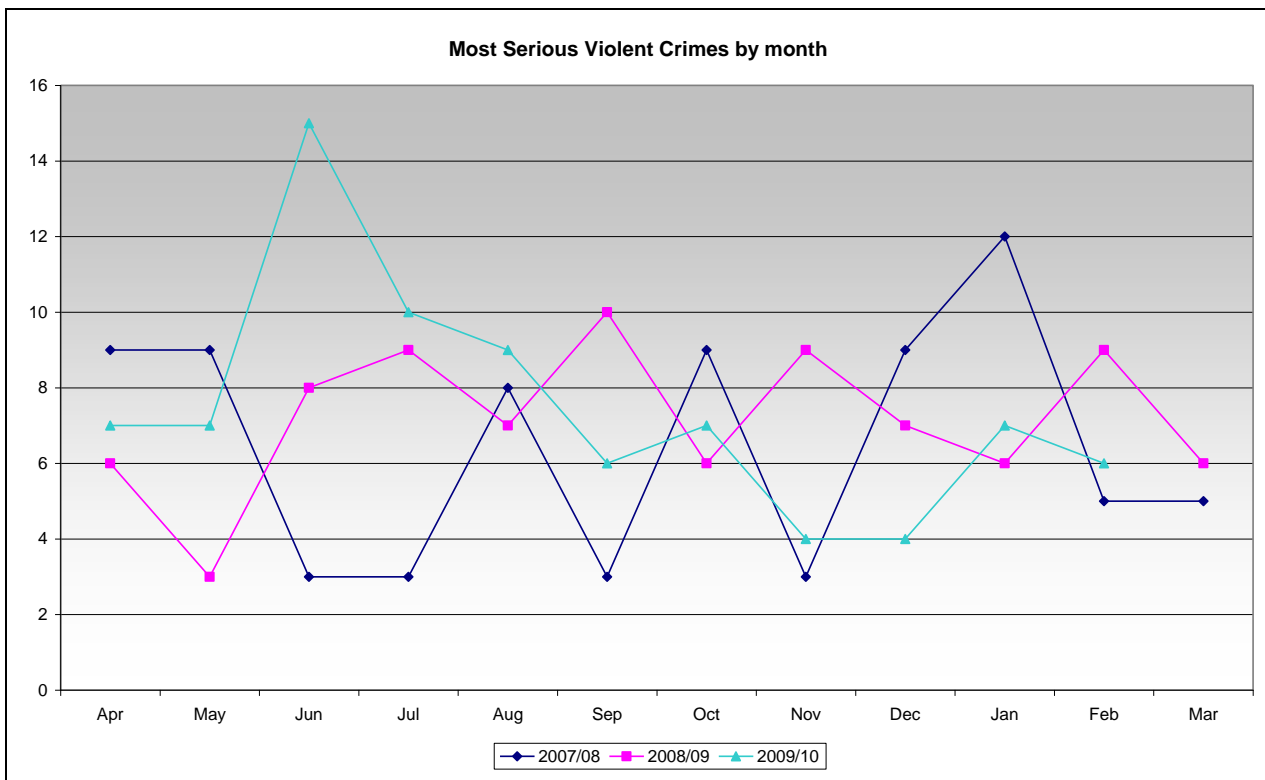
HO CLASS	2009/10 projected		2008/09		2007/08	
	No	%	No	%	No	%
1 - Murder	2	2%	1	1%	0	0%
2 - Attempted Murder	1	1%	3	3%	1	1%
4/4 - Causing Death by dangerous driving	0	0%	0	0%	1	1%
4/6 - Causing Death by careless driving when under the influence of drink or drugs	1	1%	0	0%	0	0%
5A - Wounding or Carrying out an Act Endangering Life	32	36%	44	51%	47	60%
5B - Use of Substance or object to endanger life	1	1%	0	0%	0	0%
8F - Inflicting Grievous Bodily Harm Without Intent	51	57%	38	44%	29	37%
TOTAL	89	100%	86	100%	78	100%

Despite the increase seen for MSVC, we are performing well compared to our Most Similar CDRP group in iQuanta. For the current three-month period (November 2009 – January 2010) Stockton was the best performing CDRP and for the 12-month period of February 2009 – January 2010 Stockton was the second best, performing significantly better than the group average. The graphs below are taken from iQuanta and show our performance in our MSCDRP group as well as our Most Similar Basic Command Unit (MSBCU) group.

¹ HO Codes for MSVC as per NI15 are: 1, 4/1, 4/2, 4/3, 2, 5A, 5B, 5C, 8F, 8H, 4/4, 4/6, 4/8, 37/1

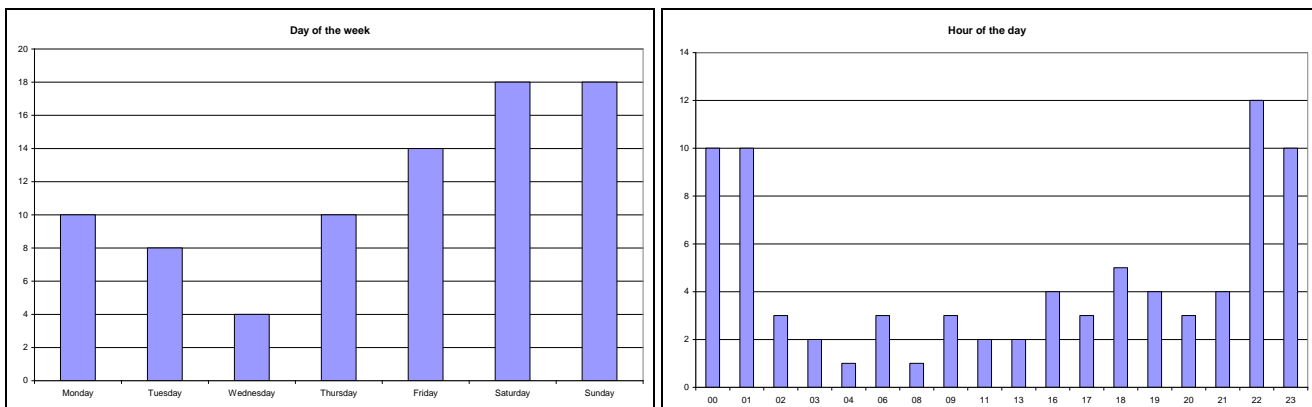


There does not appear to be any seasonal pattern to offences of MSVC. The graph below shows the number of offences by month for the past three years. The graph demonstrates that there is no clear peak for any month in particular; rather offences are distributed across the year and each year seems to follow a different pattern.



As of the beginning of March, 54% (44) of the 82 offences this financial year to date (between April 2009 and February 2010) were detected.

Of the 82 offences of MSVC between April 2009 and February 2010, only 14 (17%) could be attributed to the night time economy². However, the majority of offences did occur over the weekend period with Saturdays and Sundays accounting for 43% overall, and half of all offences occurred within the five hour period of 10pm to 2pm. The graphs below show the distribution of offences by the day of the week and the hour of the day, by earliest date and time.



There were 13 offences overall that occurred in a licensed premise, with the most common location description given as a public open space (37, 45%) followed by a dwelling (28, 34%). A total of 35 offences (43%) were flagged as being committed whilst under the influence of alcohol and/or drugs, although the reliability of this indicator is questionable as a further 15 offences were classified as unknown (18%). The domestic violence flag was attributed to 13 of the 82 offences (16%).

The vast majority of offences were committed by means of bodily force (50 offences, 61%). There were also 16 offences involving a knife as a weapon (20%), four offences involving glass or glass bottles and only one offence involving a firearm, which was an air rifle.

² NTE as defined by offences occurring between the hours of 7pm – 3am on Friday, Saturday and Sundays in or around licensed premises.

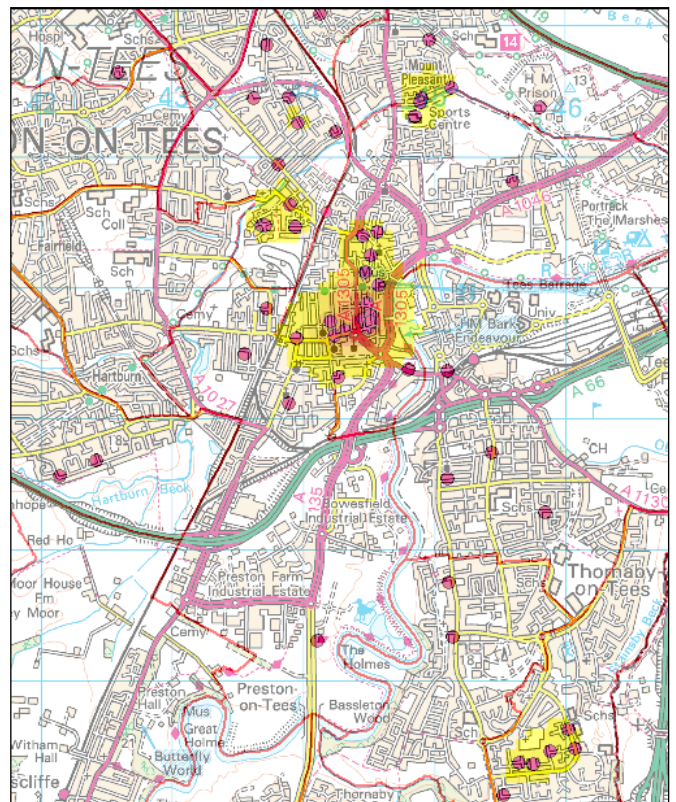
Stockton Town Centre ward accounted for the most offences with 28% overall, followed by Newtown with 12%.

The table below shows the number of offences that have occurred in each ward as well as the rate per 1,000 population of these offences. The index score is essentially the average of the rate per 1,000 population. An index score of 100 is exactly the Borough average, 50 is half the Borough average and 200 is double the Borough Average. The wards have been colour coded to show variance from the Borough average³. Red is more than twice the Borough average, amber is between half above and twice above the Borough average, and green is less than half the Borough average. Any wards in italics are above the Borough average.

Ward	Total	% of total	Rate per 1,000 pop	index
<i>Stockton Town Centre</i>	23	28%	3.40	795
<i>Newtown</i>	10	12%	1.34	313
<i>Billingham South</i>	7	9%	1.02	238
<i>Norton South</i>	7	9%	0.90	210
<i>Stainsby Hill</i>	6	7%	0.90	210
<i>Parkfield and Oxbridge</i>	5	6%	0.69	162
<i>Hardwick</i>	3	4%	0.44	102
Billingham Central	3	4%	0.43	100
Mandale and Victoria	4	5%	0.38	89
Norton West	2	2%	0.31	73
Village	2	2%	0.30	70
Hartburn	2	2%	0.29	68
Northern Parishes	1	1%	0.29	67
Yarm	2	2%	0.20	47
Norton North	1	1%	0.15	34
Billingham East	1	1%	0.14	33
Roseworth	1	1%	0.14	32
Billingham North	1	1%	0.11	25
Ingleby Barwick West	1	1%	0.09	21
Grand Total	82	100%	0.43	100

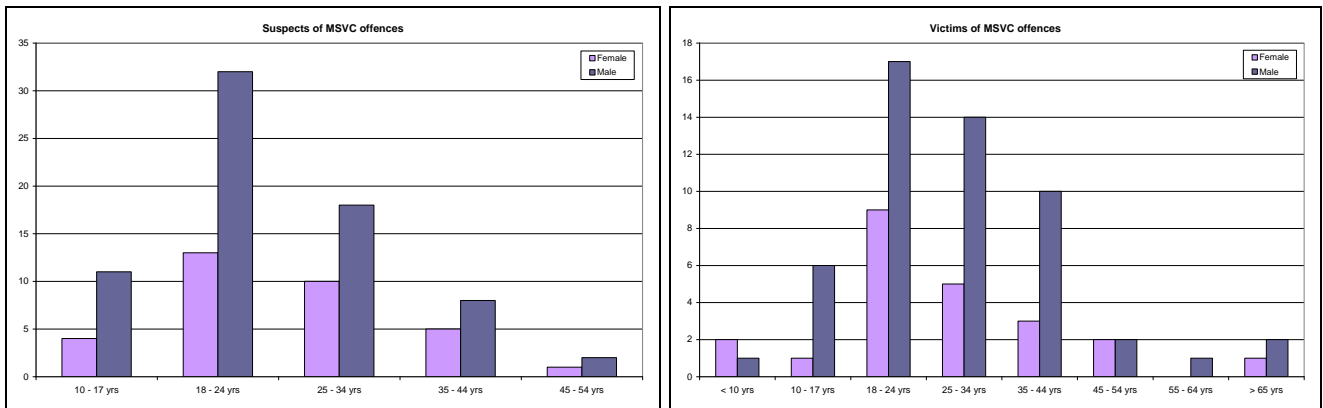
The map to the right shows the locations of the hotspots for offences of MSVC. The main hotspot was the top end of Stockton High Street / Yarm Lane. Other secondary hotspots were around Stirling Avenue Thornaby, Wrensfeld Newtown and Swainby Road Tilery.

There were four repeat locations for offences of MSVC, each with two offences; HM Holme House Prison, Zanzibar Nightclub, Jockers Public House and the Billingham Arms Hotel.



³ Red is more than twice the Borough average, amber is between half above and twice above the Borough average, and green is less than half the Borough average. Any wards in italics are above the Borough average.

The profile of suspects and victims of MSVC were very similar; 68% of both suspects and victims were male, and the most common age categories were 18 – 24 yrs followed by 25 – 34 yrs. A full breakdown can be seen in the graphs below.



Of note, of the 13 offences that were domestic related, six of the victims were female (46%) and seven were male (54%).